

All topics

Nov 9 - Concert

Nov 2 - Nov 6

Oct 26 - Oct 30

Oct 19 - Oct 23

Sept 28 - Oct 2

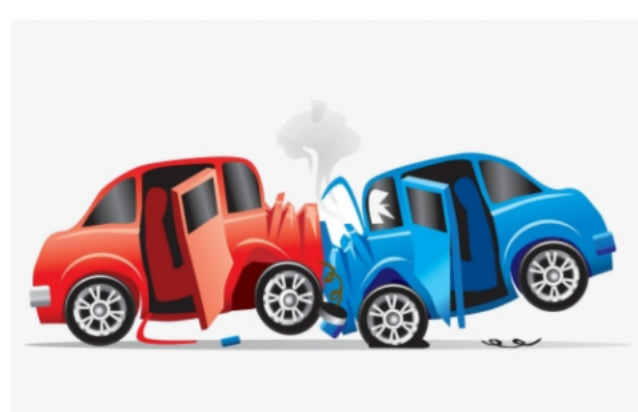
Oct 5 - Oct 9

Oct 12 - Oct 16

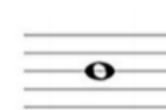
Trimester 1 Comple...

Music 5.2 Naming ...

Music 5.1 Naming ...



whole note



half note



quarter note



### Musical Accidentals & Values

Name \_\_\_\_\_ Grade \_\_\_\_\_

Instructional Video: <https://youtu.be/OBXi2PTXPCg>

Helper: b is a flat sign; it lowers a note a half-step in pitch. # is a sharp sign; it raises a note a half-step in pitch. ♮ is a natural sign. It means to play the normal pitch. A Whole Note get 4 counts. A Half Note gets 2 counts. A Quarter Note gets 1 count.



#### Accidentals: Sharps, Flats & Naturals

Instructions: Identify each note above the line provided and identify how many beats each note lasts below the line. Use the staff below if needed.



Musical staff with notes and accidentals. Below the staff is a line with a flat sign and the number 1, followed by dashes: Eb 1 - - - - -

Musical staff with notes and accidentals. Below the staff is a line with dashes: - - - - -

Musical staff with notes and accidentals. Below the staff is a line with dashes: - - - - -

### Sept 28 - Oct 2

Naming Names 3 Due 10/2 Due Oct 2

### Oct 5 - Oct 9

Naming Names 4 Due 10/9 5 Due Oct 9

### Oct 12 - Oct 16

Naming Notes 5 Due 10/16 Due Oct 16

### Trimester 1 Completed Weeks

Completed weeks listed below. No further a... Edited Oct 2

### Music 5.2 Naming Names 2

Naming Names II Due Sep 21, 8:00 PM

### Music 5.1 Naming Names 1

Naming Names Due Sep 14, 8:00 AM